

Barfoot & Thompson Trials for 2024 Tanner Cup
Kohimarama Yacht Club
9-10 December 2023
The Organising Authority is the Kohimarama Yacht Club
Kohimarama
Auckland
SAILING INSTRUCTIONS (SIs)

1 RULES

1.1 The event is governed by the rules as defined in The Racing Rules of Sailing.

1.2 The Yachting New Zealand Safety Regulations Part 1 shall apply.

1.3 Appendix T, *Arbitration*, will apply.

1.4 Appendix P, Special procedures for Rule 42, will apply, as amended by SI 15

1.5 Rule 63.7 is changed to read, "If there is a conflict between the Notice of Race and the Sailing Instructions, then the Sailing Instructions shall prevail"

2 CHANGES TO SAILING INSTRUCTIONS

2.1 Any change to the sailing instructions will be posted before 09:30 on the day it will take effect, except that any change to the schedule of races will be posted by 1900 on the day before it will take effect.

3 COMMUNICATIONS WITH COMPETITORS

3.1 Notices to competitors will be posted on the notice board located at the Kohimarama Yacht Club.

3.2 The race office is located at Kohimarama Yacht Club

4 CODE OF CONDUCT

4.1 [DP] Competitors and support persons shall comply with reasonable requests from race officials.

5 SIGNALS MADE ASHORE

5.1 Signals made ashore will be displayed on the flag staff at the Kohimarama Yacht Club

5.2 When flag AP is displayed ashore, '1 minute' is replaced with 'not less than 30 minutes' in Race Signals AP.

5.3 [DP] Flag D with one sound means 'Boats shall not leave the shore until this signal is made. The warning signal will not be made before the scheduled time or less than 20 minutes after flag D is displayed.'

6 COVID 19

6.1 Competitors and families who are unwell or have possible symptoms are encouraged not to travel to the event, and KYC offer to refund entry fees in this case.

7 SCHEDULE

7.1 Registration will be held from 08.30 hrs to 09.30 hrs on Saturday 9 December 2021.

7.2 A sailor briefing will be held at 10:00 hrs on Saturday 9 December on the beach beside the KYC deck.

7.3 Dates of racing:

| Date | Target Warning Signal | No of Races Scheduled |
|---------------------|--------------------------------------|----------------------------------|
| 9 December 2023 | 1100 hrs | 4 |
| 10 December 2023 | 1100 hrs | 3 |

7.4 One extra race per day may be sailed.

7.5 To alert boats that a race or sequence of races will begin soon, the orange starting line flag will be displayed with one sound at least five minutes before a warning signal is made.

7.6 On Sunday 10 December there will be no warning signal later than 1500 hrs.

8 CLASS FLAG

8.1 The class flag will be a letter P on white background

9 RACING AREA

9.1 The racing area is in the area between Orakei Wharf and Browns Island. SI Addendum A shows the location of the racing area.

10 COURSES

10.1 The diagram(s) in SI Addendum B show(s) the course(s), including the approximate angles between legs, the order in which marks are to be passed, and the side on which each mark is to be left.

11 MARKS

11.1 Mark descriptions are as below...

| Mark | Description |
|---------------------------|----------------------------------|
| 1,2,3 | orange triangle |
| New mark as per SI 13.1 | yellow triangle |
| Start line starboard end | committee vessel Z3 (red zodiac) |
| Start line port end | red cylinder |
| Finish line starboard end | committee vessel Z3 (red zodiac) |
| Finish line port end | orange buoy with spar |

12 THE START

12.1 The starting line is between a staff displaying an orange flag on the signal vessel at the starboard end and the course side of the port-end starting mark

12.2 [DP] Boats whose warning signal has not been made shall avoid the starting area during the starting sequence for other races.

12.3 A boat that does not start within 4 minutes after her starting signal will be scored Did Not Start without a hearing. This changes RRS A5.1 and A5.2.

13 CHANGE OF THE NEXT LEG OF THE COURSE

13.1 To change the next leg of the course, the race committee will lay a new mark (or move the finishing line) and remove the original mark as soon as practicable. When in a subsequent change a new mark is replaced, it will be replaced by an original mark.

14 THE FINISH

14.1 The finishing line is between a staff displaying a blue flag on the finishing boat at the starboard end and the course side of the port end finishing mark.

15 PENALTY SYSTEM

15.1 Rule 44.1 is modified to replace a two turns penalty with a one turn penalty when a boat may have broken one or more rules of part 2 in an incident while racing.

16 TIME LIMITS AND TARGET TIMES

16.1 The Race Time Limit, Target Time and the Finishing Window are shown in the table below.

| Target Time | Race Time Limit | Finishing Window |
|-------------|-----------------|------------------|
| 30 minutes | 50 minutes | 15 minutes |

16.2 Boats failing to finish within the Finish Window after the first boat starts, sails the course and finishes within the race time limit will be scored Did Not Finish without a hearing. This changes RRS 35, A5.1 and A5.2.

16.3 Failure to meet the Target Time will not be grounds for redress. This changes RRS 62.1(a).

17 HEARING REQUESTS

17.1 The protest time limit is 60 minutes after the last boat in that fleet finishes the last race of the day or the race committee signals no more racing today, whichever is later. The time will be posted on the official notice board.

17.2 Hearing request forms are available from the race office at the Kohimarama Yacht Club

17.3 Notices will be posted no later than 30 minutes after the protest time limit to inform competitors of hearings in which they are parties or named as witnesses. Hearings will be held in the protest room, located at Jury Office.

17.4 A list of boats that have been penalized for breaking RRS 42 under Appendix P will be posted.

17.5 Breaches of Sailing Instructions 12.2 (Avoiding starting area), 19 (Safety Regulations), 23 (Support teams), 24 (Trash Disposal), will not be grounds for protest by a boat. This changes RRS 60.1 (a)

17.6 Immediately after finishing a boat intending to protest shall, in addition to the requirements of RRS61.1(a), inform the race committee at the finishing line of her intention to protest and the identity of the boat(s) protested against. The protesting boat must receive an acknowledgement from the race committee. This changes RRS 61.

18 SAFETY REGULATIONS

18.1 [DP] Check-out and check-in ashore

(a) Competitors shall individually check-out before racing by personally signing check out sheets located on the deck of Kohimarama yacht club

(b) Competitors shall individually check-in immediately on returning to shore after racing by personally signing check-in sheets located on the deck of Kohimarama yacht club.

18.2 [DP] A boat that retires from a race shall notify the race committee at the first reasonable opportunity.

19 REPLACEMENT OF CREW OR EQUIPMENT

19.1 [DP] Substitution of competitors is not allowed.

19.2 [DP] Substitution of damaged or lost equipment is not allowed unless authorised in writing by the Race Committee. Requests for substitution shall be made to the committee at the first reasonable opportunity, which may be after the race.

20 EQUIPMENT AND MEASUREMENT CHECKS

20.1 A boat or equipment may be inspected at any time for compliance with the class rules, notice of race and sailing instructions.

20.2 [DP] When instructed by a race official on the water, a boat shall proceed to a designated area for inspection.

21 [DP] SUPPORT TEAMS

22.1 Except when requested to participate in rescue operations, team leaders, coaches, and other support persons shall stay outside areas where boats are racing and are restricted to a 5 knot speed limit, from the time of the preparatory signal for the first start of a sequence of starts until all boats have finished or the race committee signals a postponement or abandonment of all races. The areas the boats are racing in is defined as the area inside the course and within 100 metres of any mark, lay line, starting line, finishing line or any area where any boat that is racing is sailing or may sail.

22.2 Attention is drawn to the relevant local council bylaws regarding the wearing of lifejackets and other restrictions.

23 TRASH DISPOSAL

23.1 Trash may be placed aboard official [or support person] vessels.

24 LAUNCHING

24.1 [DP] All P class shall be launched from Kohimarama Beach unless instructed otherwise.

25 PRIZES

25.1 The top ranked competitors will be selected to represent Auckland in the 2024 Tanner Cup competition. The number of competitors selected as per P Class rules. The number of places available will be posted on the notice board at the completion of registration.

25.2 Selected sailors will have 24 hours to accept their place in Auckland team for the Tanner Cup. If they do not accept, or decline their selection, the OA will offer their place in the team to the highest ranked non-selected sailor.

NUMBER OF TANNER CUP ENTRIES PER DISTRICT

| Entries in Trials | Tanner Cup Places |
|-------------------|-------------------|
| 1 - 3 | 1 |
| 4 - 6 | 2 |
| 7 - 10 | 3 |
| 11 - 15 | 4 |
| 16 - 21 | 5 |
| 22 - 27 | 6 |

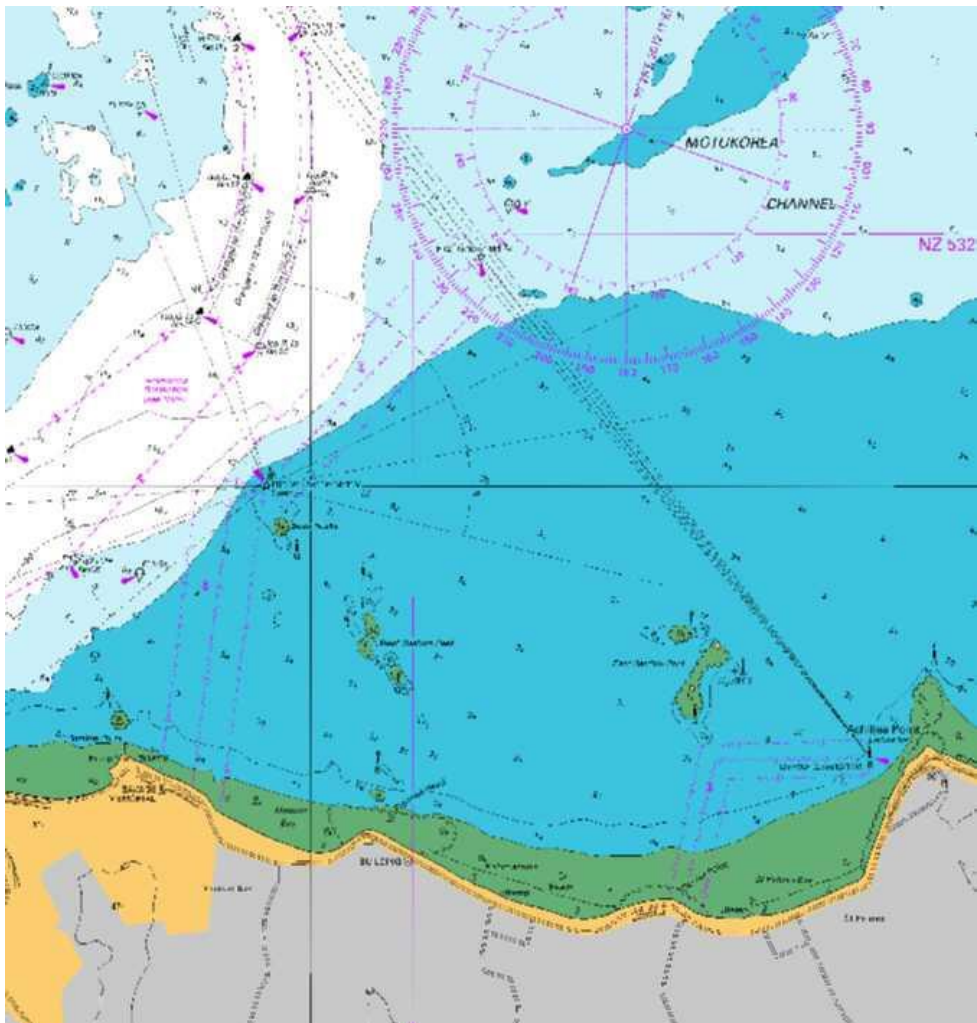
26 RISK STATEMENT

26.1 RRS 3 states: 'The responsibility for a boat's decision to participate in a race or to continue to race is hers alone.' By participating in this event each competitor agrees and acknowledges that sailing is a potentially dangerous activity with inherent risks. These risks include strong winds and rough seas, sudden changes in weather, failure of equipment, boat handling errors, poor seamanship by other boats, loss of balance on an unstable platform and fatigue resulting in increased risk of injury. Inherent in the sport of sailing is the risk of permanent, catastrophic injury or death by drowning, trauma, hypothermia or other causes...

27 INSURANCE

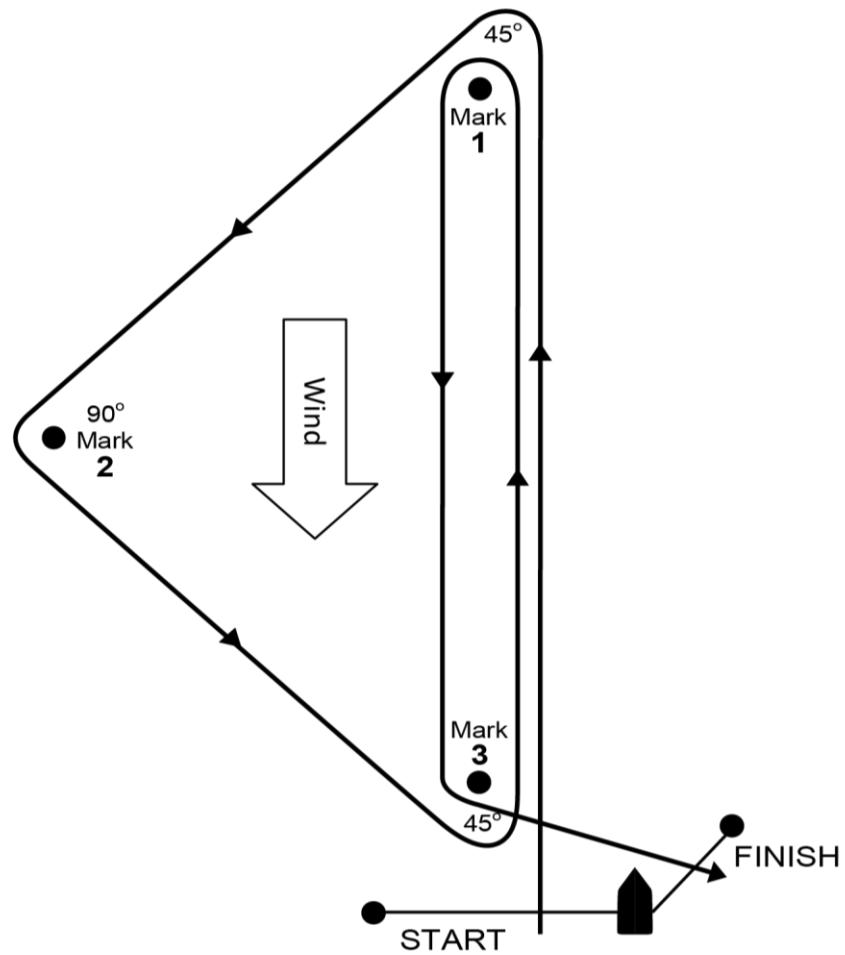
27.1 It is recommended that each participating boat shall be insured with valid third-party liability insurance with a minimum cover of \$1,000,000 per incident or the equivalent.

Addendum A Racing Area



**Addendum B
Courses**

Triangle Windward – Leeward Course

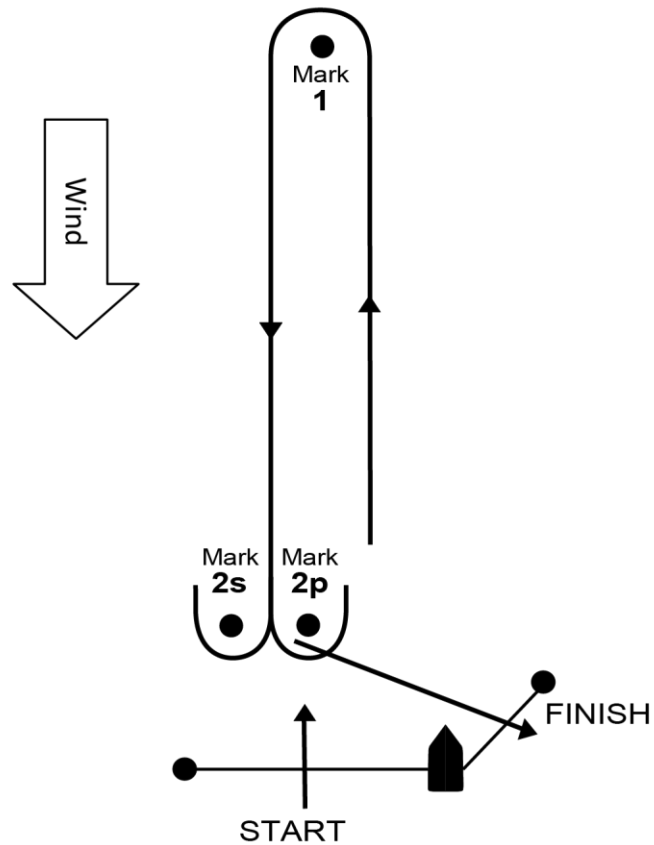


T1 Start – 1 – 2 – 3 – Finish

T2 Start – 1 – 2 – 3 – 1 – 3 – Finish

T3 Start – 1 – 2 – 3 – 1 – 3 – 1 – 2 – 3 – Finish

Windward – Leeward Course



W1 Start – 1 – 2p – Finish

W2 Start – 1 – 2s/2p – 1 – 2p – Finish

W3 Start – 1 – 2s/2p – 1 – 2s/2p – 1 – 2p – Finish

W4 Start – 1 – 2s/2p – 1 – 2s/2p – 1 – 2s/2p – 1 – 2p – Finish