

2025 AUCKLAND CHAMPIONSHIPS



SATURDAY 25 TO MONDAY 27 JANUARY 2025

Incorporating the 2025 Auckland Anniversary Regatta

The Organising Authority is Kohimarama Yacht Club

Sailing Instructions (SIs)

The notation '[NP]' in a rule of the sailing instructions (SIs) means that a boat may not protest another boat for breaking that rule. This changes RRS 60.1(a).

The notation '[DP]' in a rule means that the penalty for a breach of that rule may, at the discretion of the protest committee, be less than disqualification.

1 RULES

- 1.1** The event is governed by the rules as defined in The Racing Rules of Sailing.
- 1.2** [DP] The Yachting New Zealand Safety Regulations Part 1 shall apply.
- 1.3** Under RRS 86, Changes to the Racing Rules, the following rules will be changed as follows:
 - The race committee may award a finishing score to a boat that is still racing by displaying to her from a committee vessel (which may be in motion) flag W with one sound signal. A boat so notified is no longer required to sail the course (changing rule 28), shall stop racing, and shall return to the starting area, or return ashore if there is no more racing. A finishing score under this (Sailing Instruction) will be the score she would have received had she sailed the course and finished within any time limit, without gaining or losing any place. However, when two or more boats that are overlapped are notified, they will be scored as if they were tied.
 - RRS 44.1 will be changed so that the Two-Turns Penalty is replaced with the One-Turn penalty.
 - RRS 60.1 (a) will be changed to state that a competitor cannot protest another boat or competitor for breaches of some specific parts of Sailing Instructions or Supplementary Sailing Instructions
- 1.4** The 29er, 420 and 470 One Design class rules will apply.
- 1.5** Appendix T, Arbitration, will apply.

2 CHANGES TO SAILING INSTRUCTIONS

- 2.1** Any change to the sailing instructions will be posted before 0930 on the day it will take effect, except that any change to the schedule of races will be posted by 1800 on the day before it will take effect.

3 COMMUNICATIONS WITH COMPETITORS

- 3.1** Notices to competitors will be posted on the official noticeboard located inside the Kohimarama Yacht Club.

4 CODE OF CONDUCT

- 4.1** [DP] Competitors and support persons shall comply with reasonable requests from race officials.

5 SIGNALS MADE ASHORE

- 5.1** Signals made ashore will be displayed from the flag pole in front of the club house.
- 5.2** When flag AP is displayed ashore, '1 minute' is replaced with 'not less than 30 minutes' in Race Signals AP.
- 5.3** [DP] Flag D with one sound means 'Boats shall not leave the beach until this signal is made. The warning signal will not be made before the scheduled time or less than 30 minutes after flag D is displayed.'

6 SCHEDULE OF RACES

- 6.1** Registration will be from 0930 to 1030 on Saturday 25 January at Kohimarama Yacht Club.
- 6.2** A sailors briefing will be held at 1030 on Saturday 25 January at Kohimarama Yacht Club.
- 6.3** A support vessel briefing will follow the sailors briefing.
- 6.4**

Day/Date	Class	Number of races	Time of First Warning Signal
Saturday 25 th January	29er	4	1155
	420	4	1200
	470	4	1205
Sunday 26 th January	29er	4	1055
	420	4	1100
	470	4	1105
Monday 27 th January	29er	4	1055
	420	4	1100
	470	4	1105

Order of first starts as above.

- 6.5** One extra race per day may be sailed.
- 6.6** To alert boats that a race or sequence of races will begin soon, the orange starting line flag will be displayed with one sound at least five minutes before a warning signal is made.
- 6.7** On the last scheduled day of racing no warning signal will be made after 1500.

7 CLASS FLAGS

7.1 Class flags are:

Class	Class flag
29er	White flag with a black 29er insignia
420	White flag with a black 420 insignia
470	White flag with a black 470 insignia

8 RACING AREA

8.1 Addendum A shows the location of the racing area as “Race Area B”.

9 COURSES

9.1 The diagrams in SI Addendum B show the courses, including the approximate angles between legs, the order in which marks are to be passed, and the side on which each mark is to be left.

9.2 No later than the warning signal, the race committee signal vessel will display the approximate compass bearing of the first leg.

9.3 Legs of the course will not be changed after the preparatory signal. This changes RRS 33.

10 MARKS

10.1 Mark descriptions are shown in Addendum B - courses

11 THE START

11.1 Races will be started using RRS 26 with the warning signal made five (5) minutes before the starting signal.

11.2 The starting line is between the orange staff on the signal vessel at the starboard end and the course side of the port-end starting mark

11.3 [DP][NP] Boats whose warning signal has not been made shall avoid the starting area during the starting sequence for other races.

11.4 A boat that does not start within four minutes after her starting signal will be scored Did Not Start without a hearing. This changes RRS A5.1 and A5.2.

12 THE FINISH

12.1 The finishing line is between a staff displaying a blue flag on the finishing mark at the starboard end and the course side of the port end finishing mark.

13 TIME LIMITS AND TARGET TIMES

13.1 The Race Time Limit is 60 minutes. Target Time is 30 minutes.

13.2 The race committee may award a finishing score to a boat that is still racing by displaying to her from a committee vessel (which may be in motion) flag W with one sound signal. A boat so notified is no longer required to sail the course (changing rule 28), shall stop racing and shall return to the starting area, or return ashore if there is no more racing. A finishing score under this Sailing Instruction will be the score she would have received had she sailed the course and finished within any time limit, without gaining or losing any place. However, when two or more boats that are overlapped are notified, they will be scored as if they were tied.

- 13.3** Failure to meet the Target Time will not be grounds for redress. This changes RRS 62.1(a).

14 HEARING REQUESTS

- 14.1** The protest time limit is sixty (60) minutes after the last boat in that class finishes the last race of the day or the race committee signals no more racing today, whichever is later. The time will be posted on the official notice board.
- 14.2** Hearing request forms are available from the race office at the clubhouse.
- 14.3** Notices will be posted no later than 30 minutes after the protest time limit to inform competitors of hearings in which they are parties or named as witnesses. Hearings will be held in the clubhouse, beginning at the time posted.
- 14.4** Immediately after finishing and before approaching coach or support boats a boat intending to protest shall, in addition to the requirements of RRS61.1(a), inform the race committee at the finishing line of her intention to protest and the identity of the boat(s) protested against. The protesting boat must receive an acknowledgement from the race committee. This changes RRS 61.

15 SCORING

- 15.1** 5 races are required to be completed to constitute a series.
- 15.2** A boat's series score shall be:
- (a) When fewer than 5 races have been completed, a boat's series score will be the total of her race scores.
 - (b) When from 5 to 12 races have been completed, a boat's series score will be the total of her race scores excluding her worst score.

16 [DP][NP]SAFETY REGULATIONS

- 16.1** All boats intending to race shall complete the sign-on process using the sheets provided on the deck at Kohi Yacht Club.
- 16.2** Immediately on returning to shore, all boats shall complete the sign-off process using the sheets provided on the deck at Kohi Yacht Club.
- 16.3** A boat that retires from a race or returns to the launching area before she has finished the last race of the day shall notify the Race Committee as soon as possible.

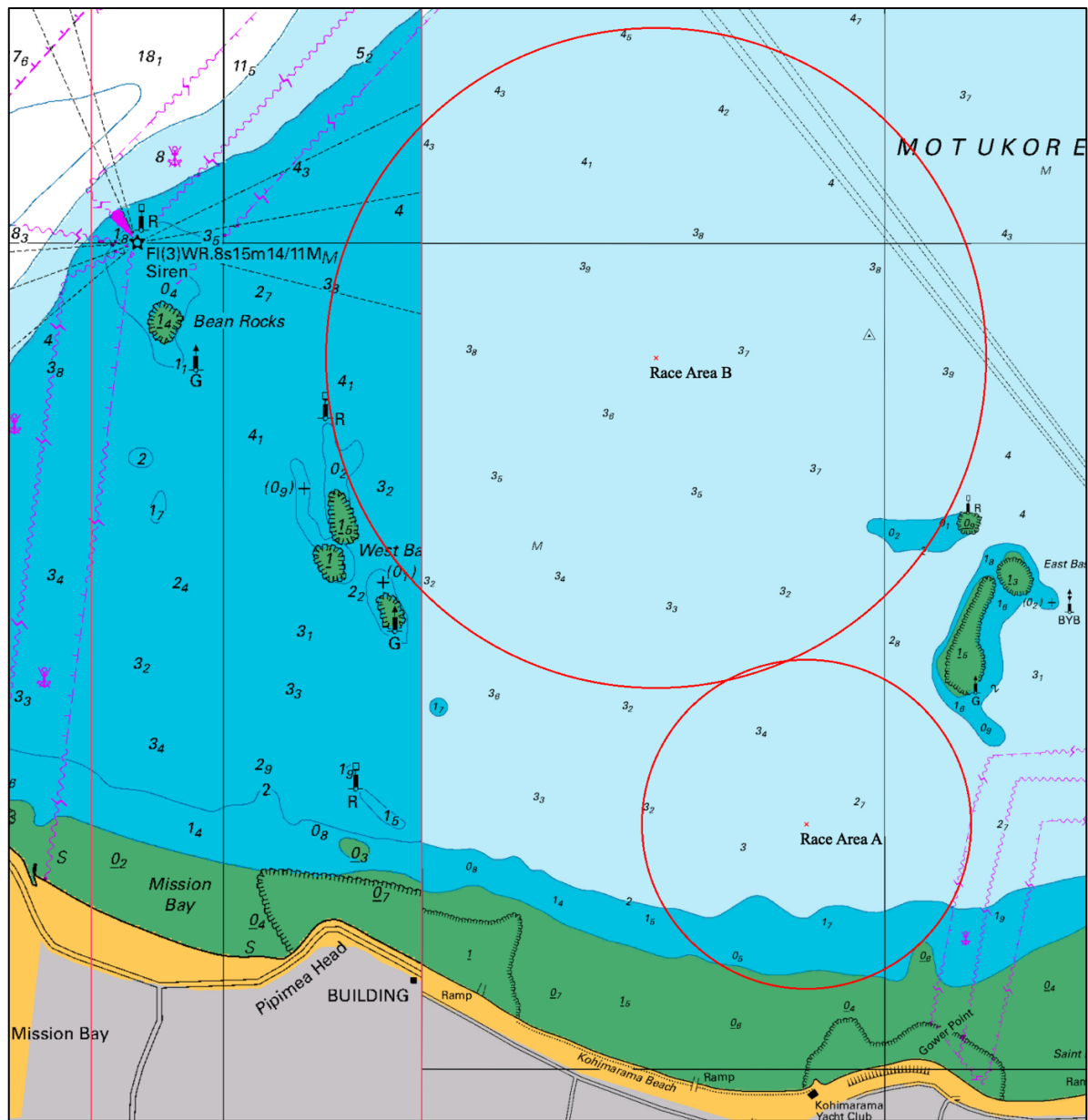
17 [DP][NP] SUPPORT TEAMS

- 17.1** Except when requested to participate in rescue operations, team leaders, coaches, and other support persons shall stay outside areas where boats are racing and are restricted to a 5 knot speed limit, from the time of the preparatory signal for the first start of a sequence of starts until all boats have finished or the race committee signals a postponement or abandonment of all races. The areas the boats are racing in is defined as the area inside the course and within 100 metres of any mark, lay line, starting line, finishing line or any area where any boat that is racing is sailing or may sail.
- 17.2** All official and support vessels shall always have an engine safety cut out switch (kill cord) attached to the driver while the engine is running, unless prior written exemption has been provided by the Organising Authority.

21 RISK STATEMENT

- 21.1** RRS 3 states: 'The responsibility for a boat's decision to participate in a race or to continue to race is hers alone.' By participating in this event each competitor agrees and acknowledges that sailing is a potentially dangerous activity with inherent risks. These risks include strong winds and rough seas, sudden changes in weather, failure of equipment, boat handling errors, poor seamanship by other boats, loss of balance on an unstable platform and fatigue resulting in increased risk of injury. Inherent in the sport of sailing is the risk of permanent, catastrophic injury or death by drowning, trauma, hypothermia or other causes.

Addendum A Racing Areas

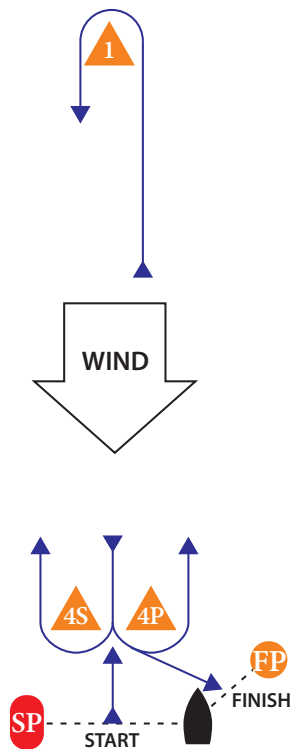


Addendum B Courses

Appendix A

Course Illustration – Windward Leeward with reaching finish

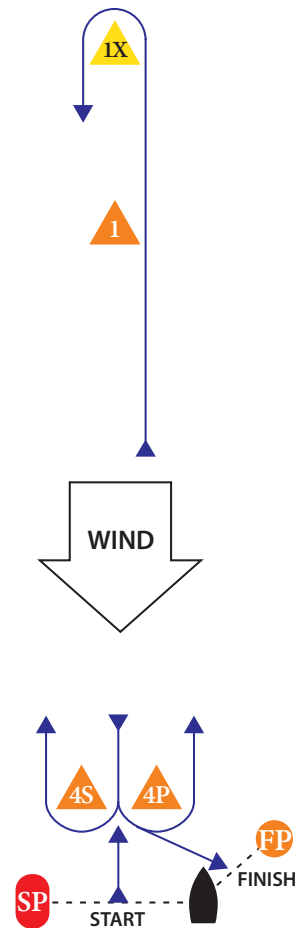
LR



Course Leeward finish

Signal	Mark Rounding Order
LR2	Start – 1 – 4s/4p – 1 – 4p – Finish
LR3	Start – 1 – 4s/4p – 1 – 4s/4p – 1 – 4p – Finish

LRX



Course Leeward finish

Signal	Mark Rounding Order
LRX2	Start – 1 – 4s/4p – 1 – 4p – Finish
LRX3	Start – 1 – 4s/4p – 1 – 4s/4p – 1 – 4p – Finish

MARK	DESCRIPTION	MARK	DESCRIPTION
	Orange Triangle		Race Committee Vessel
	Orange Triangle		Red Cylinder
	Orange Triangle		Orange Round Buoy
	Orange Triangle		
	Yellow Triangle		