



PredictWind Girls Champs 2025

Saturday 22 & Sunday 23 March

The Organising Authority is Kohimarama Yacht Club (Inc.) Regatta

Address: 80 Tamaki Drive, Kohimarama, Auckland

SAILING INSTRUCTIONS – COURSE B – Rev 1A

The notation '[NP]' in a rule of the sailing instructions (SIs) means that a boat may not protest another boat for breaking that rule. This changes RRS 60.1(a).

1. RULES

- 1.1 The event is governed by the rules as defined in The Racing Rules of Sailing.
- 1.2 [DP] The Yachting New Zealand Safety Regulations Part 1 shall apply.
- 1.3 Appendix T, Arbitration, will apply.

2. CHANGES TO SAILING INSTRUCTIONS

- 2.1 Any change to the sailing instructions will be posted before 0930 on the day it will take effect, except that any change to the schedule of races will be posted by 1800 on the day before it will take effect.

3. COMMUNICATIONS WITH COMPETITORS

- 3.1 Notices to competitors will be posted on the official noticeboard located inside the Kohimarama Yacht Club and on the team app. Go to Team App and join **PredictWind Girls Champs 2025** to access.

4. CODE OF CONDUCT

- 4.1 [DP] Competitors and support persons shall comply with reasonable requests from race officials.

5. SIGNALS MADE ASHORE

- 5.1 Signals made ashore will be displayed from the flag pole in front of the club house.
- 5.2 When flag AP is displayed ashore, '1 minute' is replaced with 'not less than 30 minutes' in Race Signals AP.
- 5.3 [DP] Flag D with one sound means 'Boats shall not leave the beach until this signal is made. The warning signal will not be made before the scheduled time or less than 30 minutes after flag D is displayed.'

6. SCHEDULE OF RACES

- 6.1** Registration will be from 0830 to 0930 on Saturday 22 March at Kohimarama Yacht Club.
- 6.2** An all sailors briefing will be 0930 on Saturday 22 March at Kohimarama Yacht Club.
There will be a separate Course A fleet briefing following this at 1000.
On Sunday there will be a separate 0900 briefing for Course B upstairs in the Yacht Club.
- 6.3** A support vessel briefing on Saturday will follow the sailors briefing for each course on the Yacht Club deck.
- 6.4** Each Fleet (4+ boats) will have their own start.
First warning signal **Saturday 1055**
First warning signal **Sunday 1025**
All fleets back to back rolling starts, order of fleets will be advised at briefing. The RO reserves the right to change race order on the water. Starting Fleet class flag will be displayed onboard the Committee Boat.
- 6.5** Up to 4 races are scheduled per day. At the discretion of the Race Committee the number of races may be altered to suit circumstances.
- 6.6** One extra race per day may be sailed, provided that no class becomes more than one race ahead of schedule and the change is made according to SI 2.1.
- 6.7** To alert boats that a race or sequence of races will begin soon, the orange starting line flag will be displayed with one sound at least five minutes before a warning signal is made.
- 6.8** On Saturday there will be no warning signal made after 1530. On Sunday there will be no warning signal will be made after 1500.

7. CLASS FLAGS

- 7.1** Class flags are:

Class	Class flag
Optimist Open	Blue flag with a white optimist insignia
Optimist White	White flag with a black optimist insignia
Starling	White flag with a red starling insignia
Feva	White flag with black RS Feva insignia
ILCA6	Red flag with white Laser class insignia
420	White Flag with black 420 insignia
29er	White flag with flag with black 29er insignia
IQ foil	TBC

8. RACING AREA

- 8.1** Addendum A shows the location of the racing area.

9. COURSES

- 9.1** The diagrams in SI Addendum B show the courses, including the approximate angles between legs, the order in which marks are to be passed, and the side on which each mark is to be left.
- 9.2** No later than the warning signal, the race committee signal vessel will display the approximate compass bearing of the first leg.
- 9.3** Legs of the course will not be changed after the preparatory signal. This changes RRS 33.

10. MARKS

- 10.1** Mark descriptions are shown in Addendum B – courses.

11. THE START

- 11.1** Races will be started using RRS 26 with the warning signal made three (3) minutes before the starting signal.
- 11.2** The starting line is between a staff displaying an orange flag on the signal vessel at the starboard end and the course side of the port-end starting mark.
- 11.3** [DP][NP] Boats whose warning signal has not been made shall avoid the starting area during the starting sequence for other races.
- 11.4** A boat that does not start within four minutes after her starting signal will be scored Did Not Start without a hearing. This changes RRS A5.1 and A5.2.

12. THE FINISH

- 12.1** The finishing line is between a staff displaying a blue flag on the finishing mark at the starboard end and the course side of the port end finishing mark.

13. TIME LIMITS AND TARGET TIMES

- 13.1** The Race Time Limit is 60 minutes. Target Time is 30 minute.
- 13.2** The race committee may award a finishing score to a boat that is still racing by displaying to her from a committee vessel (which may be in motion) flag W with one sound signal. A boat so notified is no longer required to sail the course (changing rule 28), shall stop racing and shall return to the starting area, or return ashore if there is no more racing. A finishing score under this Sailing Instruction will be the score she would have received had she sailed the course and finished within any time limit, without gaining or losing any place. However, when two or more boats that are overlapped are notified, they will be scored as if they were tied.
- 13.3** Failure to meet the Target Time will not be grounds for redress. This changes RRS 62.1(a).

14. HEARING REQUESTS

- 14.1** The protest time limit is sixty (60) minutes after the last boat in that class finishes the last race of the day or the race committee signals no more racing today, whichever is later. The time will be posted on the official notice board.
- 14.2** Hearing request forms are available from the race office at the clubhouse.
- 14.3** Notices will be posted no later than 30 minutes after the protest time limit to inform competitors of hearings in which they are parties or named as witnesses. Hearings will be held in the clubhouse, beginning at the time posted.
- 14.4** Immediately after finishing and before approaching coach or support boats a boat intending to protest shall, in addition to the requirements of RRS61.1(a), inform the race committee at the finishing line of her intention to protest and the identity of the boat(s) protested against. The protesting boat must receive an acknowledgement from the race committee. This changes RRS 61.

15. SCORING

- 15.1** One race is required to constitute a regatta.
- 15.2** A boat's score will be based on their finishing position in their fleet.
- 15.3** When fewer than five races have been completed, a boat's series score will be the total of her race scores.
- 15.4** When five or more races have been completed, a boat's series score will exclude her worst race score.

16. [DP][NP] SAFETY REGULATIONS

- 16.1** All boats intending to race shall complete the sign-on process using the sheets provided on the deck at Kohi Yacht Club.
- 16.2** Immediately on returning to shore, all boats shall complete the sign-off process using the sheets provided on the deck at Kohi Yacht Club.
- 16.3** A boat that retires from a race or returns to the launching area before she has finished the last race of the day shall notify the Race Committee as soon as possible.

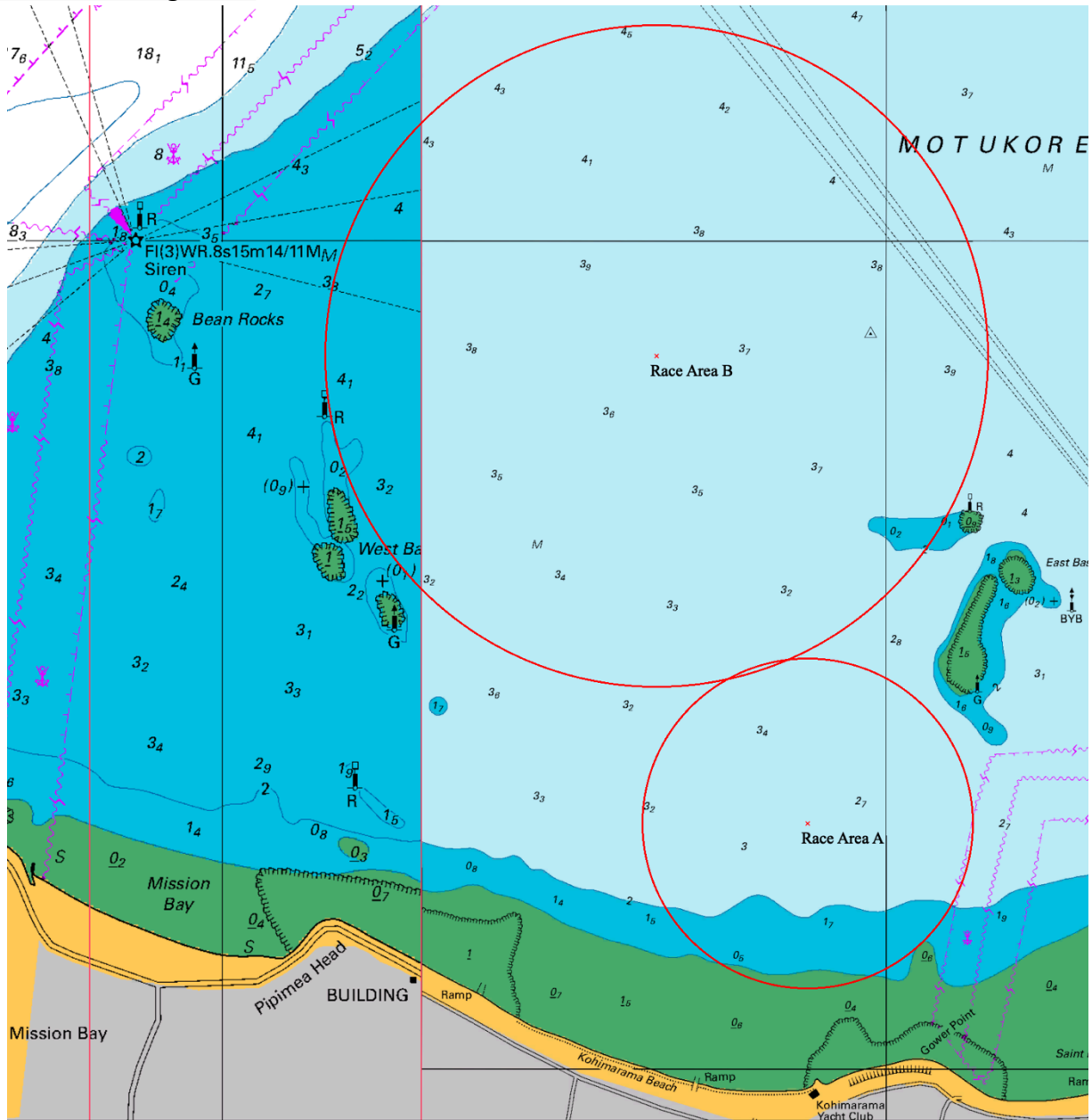
17. [DP][NP] SUPPORT TEAMS

- 17.1** Except when requested to participate in rescue operations, team leaders, coaches, and other support persons shall stay outside areas where boats are racing and are restricted to a 5 knot speed limit, from the time of the preparatory signal for the first start of a sequence of starts until all boats have finished or the race committee signals a postponement or abandonment of all races. The areas the boats are racing in is defined as the area inside the course and within 100 metres of any mark, lay line, starting line, finishing line or any area where any boat that is racing is sailing or may sail.
- 17.2** All official and support vessels shall always have an engine safety cut out switch (kill cord) attached to the driver while the engine is running, unless prior written exemption has been provided by the Organising Authority.

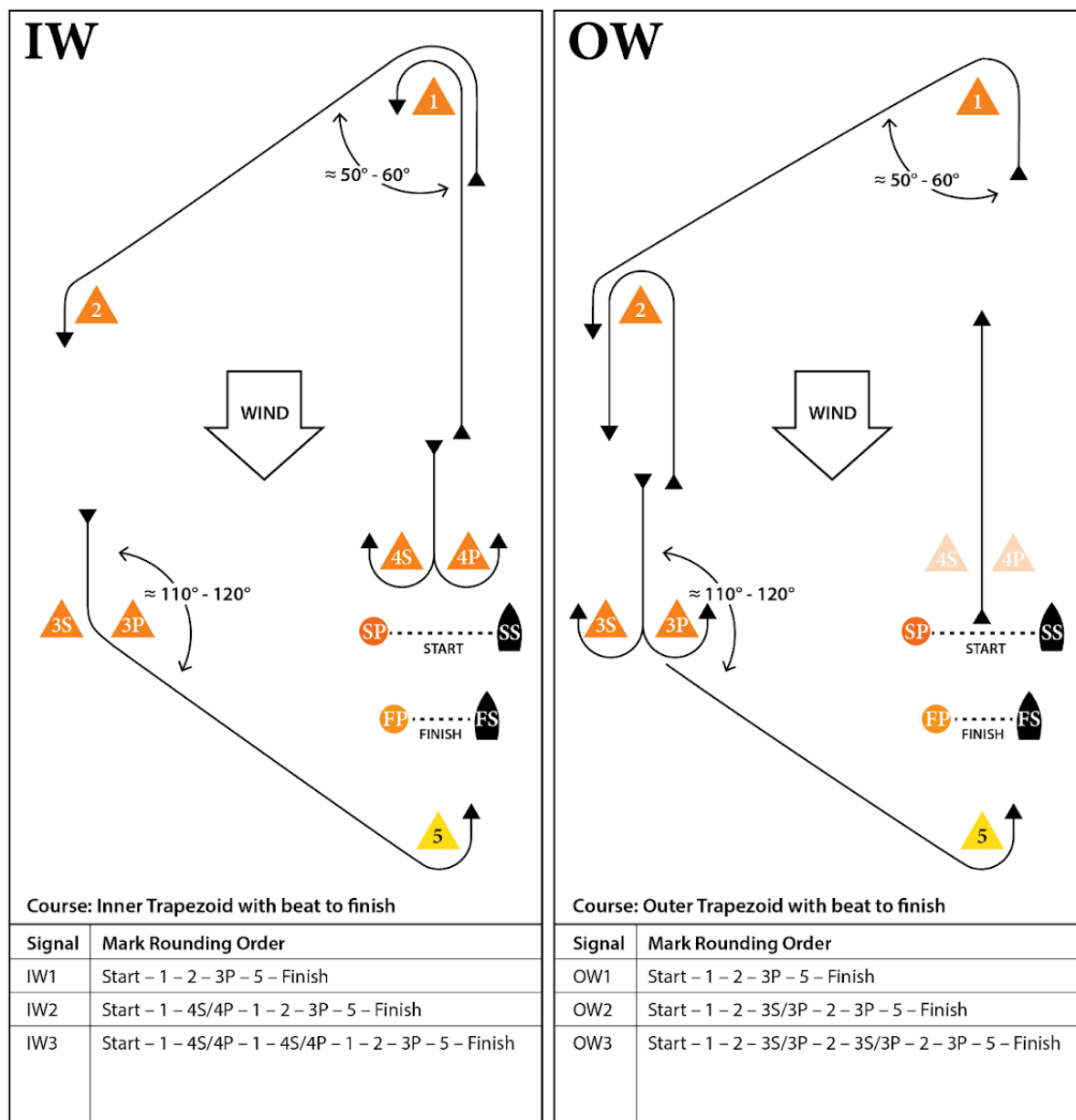
18. RISK STATEMENT

- 18.1** RRS 3 states: 'The responsibility for a boat's decision to participate in a race or to continue to race is hers alone.' By participating in this event each competitor agrees and acknowledges that sailing is a potentially dangerous activity with inherent risks. These risks include strong winds and rough seas, sudden changes in weather, failure of equipment, boat handling errors, poor seamanship by other boats, loss of balance on an unstable platform and fatigue resulting in increased risk of injury. Inherent in the sport of sailing is the risk of permanent, catastrophic injury or death by drowning, trauma, hypothermia or other causes.

Addendum A Racing Areas

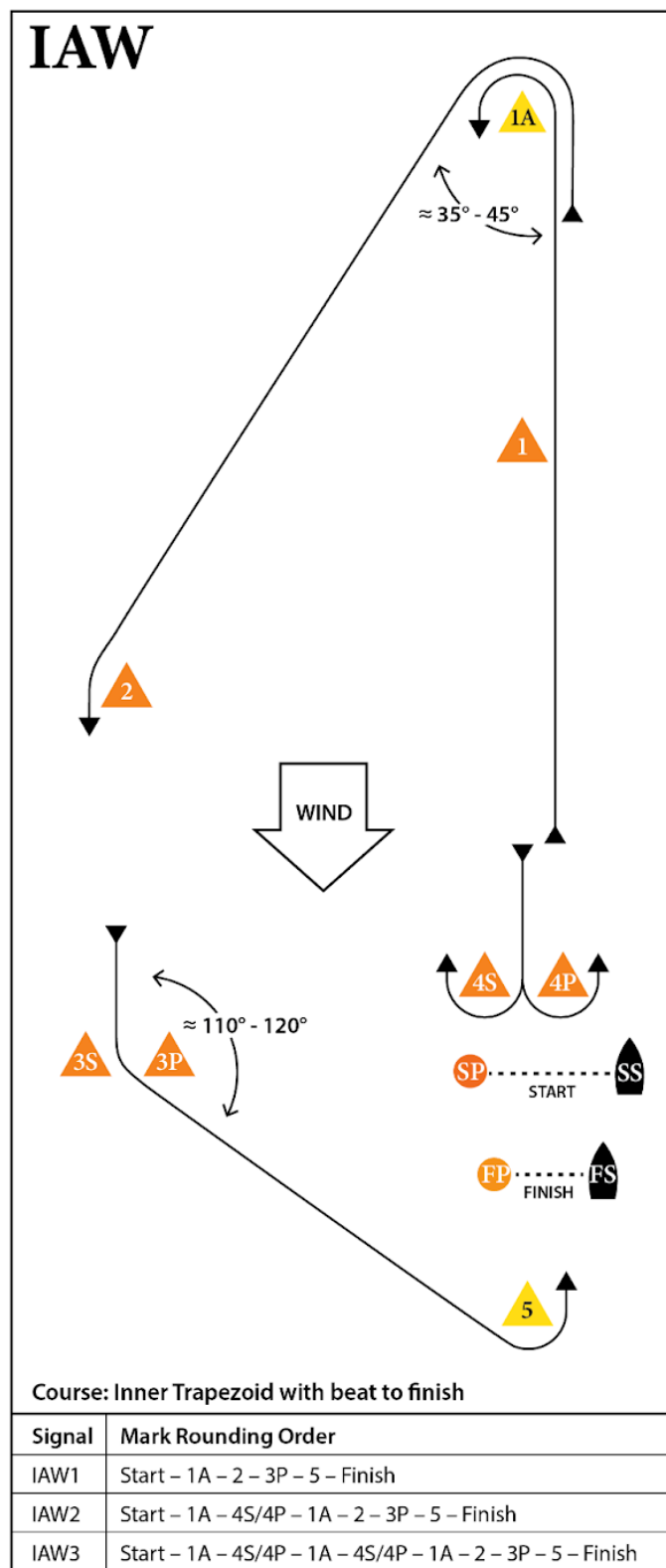


Attachment A - Course Illustration

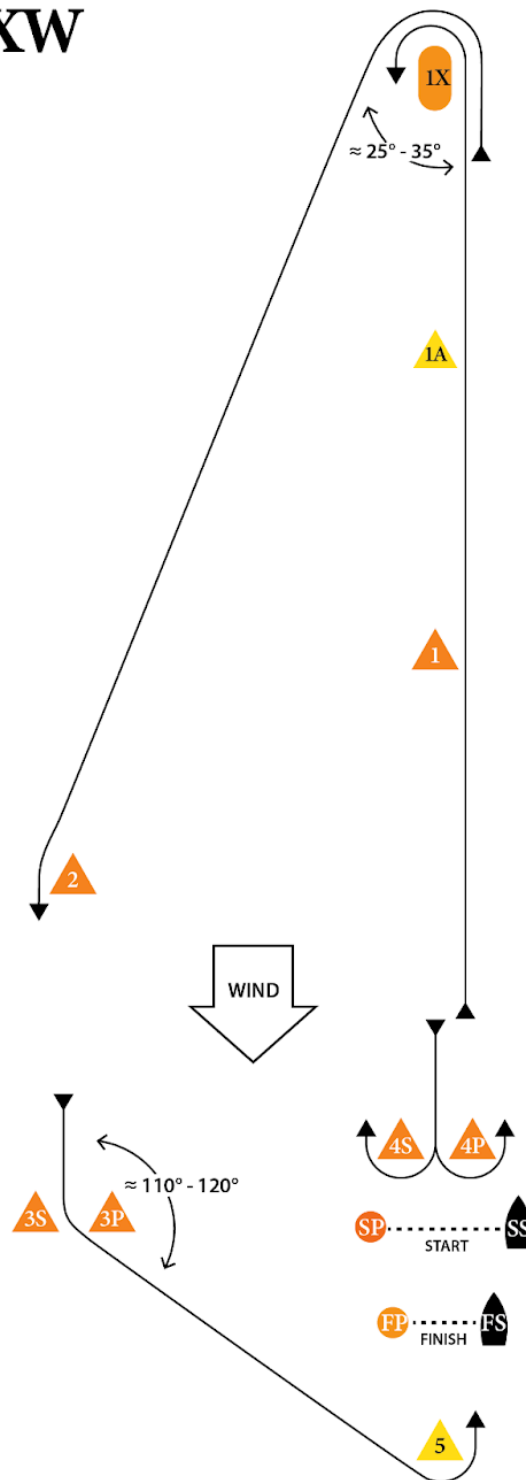


MARK	DESCRIPTION	MARK	DESCRIPTION
	Orange Triangle		Race Committee Vessel
	Orange Triangle		Orange buoy with staff
	Orange Triangle		Race Committee Vessel
	Orange Triangle		Orange Finish Mark Port End
	Orange Triangle		
	Yellow Triangle		
	Yellow Triangle		
	Orange Cylinder		

IAW



IXW



Course: Inner Trapezoid with beat to finish

Signal	Mark Rounding Order
IXW1	Start – 1X – 2 – 3P – 5 – Finish
IXW2	Start – 1X – 4S/4P – 1X – 2 – 3P – 5 – Finish
IXW3	Start – 1X – 4S/4P – 1X – 4S/4P – 1X – 2 – 3P – 5 – Finish